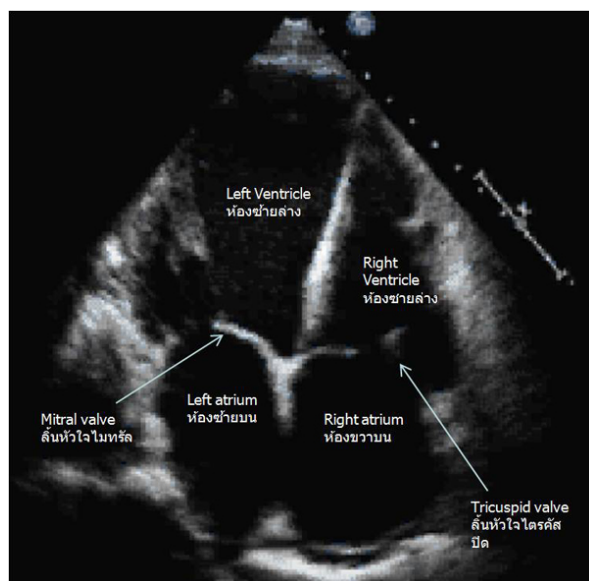


What is transthoracic echocardiogram?

Watch this VDO https://www.youtube.com/watch?v=-A8_nLFhYEo&feature=youtu.be

Transthoracic echocardiogram is an ultrasound of the heart that enables a doctor to see your heart valves, heart size , and heart function.



Are you eligible for this procedure?

When you are suspected of structural heart disease, echocardiogram is mostly needed.

Any side effects or adverse risks?

No risk or adverse effect, but a few people may feel a little pain over the examined site (chest wall) due to the pressure of the ultrasound probe.

What would you expect before the procedure?

- You will get changes to the comfortable patient gown before the exam.

- The ECG patch/sticker will be placed on your chest wall to connect your heart rhythm with the echocardiogram display.

- If the ECG patch is not available, your wrists and legs will be tagged with the ECG-capable plastic clips.

- You will be roomed in and positioned rolling over your left side.

- The chest wall area will be covered appropriately with the drape sheet.

- The procedure will take about 30-60 minutes

What would you expect after the procedure?

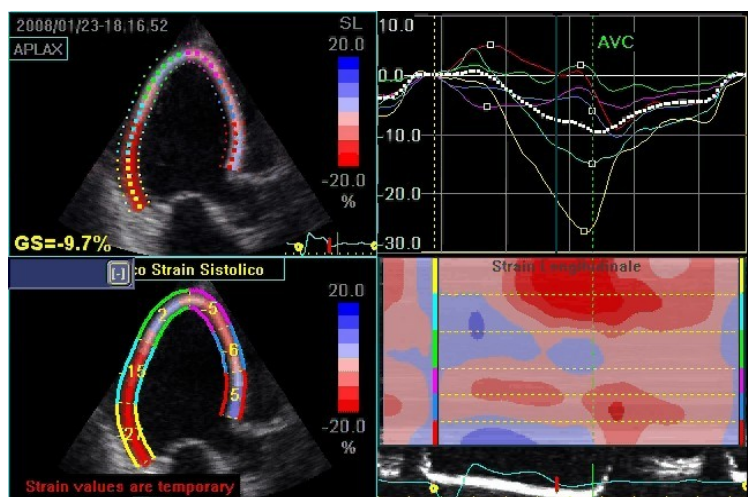
- You will be referred to the referral doctor to discuss about the results.

- In case of urgency or emergency, the doctor at echocardiography lab will discuss with you and your referral doctor, and manage appropriately.

Location: Noninvasive Lab, Bhumisiri Building FL 4

New Technology:

Strain rate or strain imaging is an ultra



sound tool to assess myocardial deformation by using echocardiography.

Due to the tissue Do

ppler imaging is angle dependent, the new technology, so-called speckle tracking echocardiography

, is better to assess myocardial deformation. This echocardiographic technology allows us to detect early cardiac abnormalities in the light of normal ejection fraction.